



\$815,000*



3



2



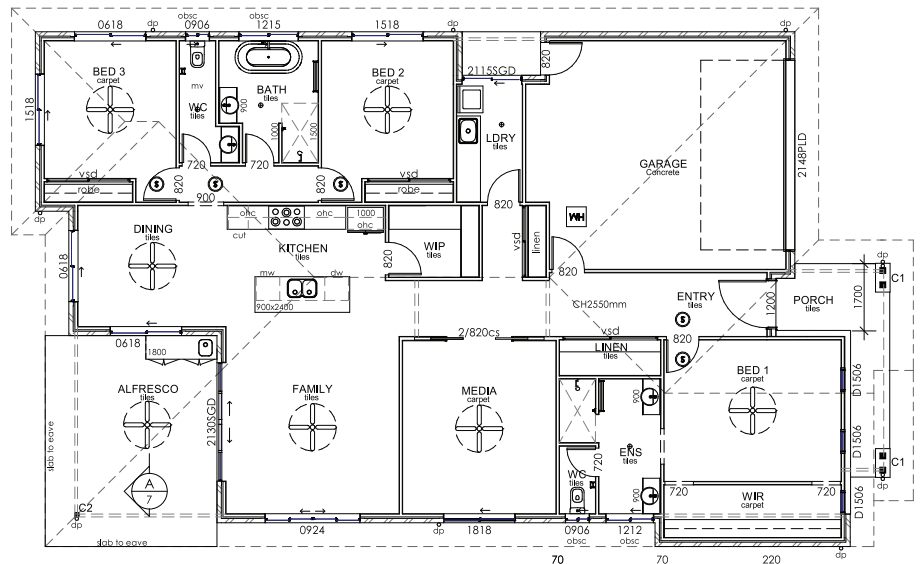
2



Total site cover 255.3m²

Watermelon Way, Kawungan - Lot 67 (744m²)

- Prime Location - close to hospital, schools and shops
- Large master bedroom with walk in robe and ensuite
- 23m² alfresco with 8m² porch
- Ducted air conditioning
- 2700mm ceiling height
- Bathroom and ensuite tiles to floor and ceiling height
- 3 step cairn cornice to lounge and main living area
- Crimsafe screens



Like this design but would like to make some changes?

Please give us a call. We are more than happy to make this your home.

For construction in late 2022.

Disclaimer: Images and representations are indicative only. *Price subject to final quote from builder at time of purchase.

LAND. LIFESTYLE. LOVE.

Call today 1300 705 405
Sales Office - 2 Richard Charles Drive, Kawungan
Email living@kingstonherveybay.com.au

Direct 07 4325 3330
Mobile 0439 436 993
www.kingstonherveybay.com.au